



"Innovative Solutions at Work"

# ONLINE AUCTION ONLY

## 40.5 ACRES ON SH 64, SWANTON, OH 43558



### STARTING BID

**\$500/acre**

### PROPERTY OVERVIEW

### OFFERING SUMMARY

**Auction Date/Time:** Begins Nov. 10th  
Ends 4 pm Dec. 8th  
(Bid online)

**Lot Size:** 40.5 acres

**Parcel #:** 14-025183-11.000  
14-025181-00.000  
14-024901-00.002

**Zoned:** 14-025183-11.000 - R-2  
14-025181-00.000 - B-2  
14-02401.00.002 - R-2

**Real Estate Taxes:** \$3,777.47/half

Farm and mixed woods that have been approved and zoned for residential development including single family, villas, or for use as private estate. Great for use as a private nature preserve or a small farm. Property has access to all utilities including water, sewer, electric and gas. Within sight of new Swanton High School. Wooded areas of mixed mature hardwoods. Drainage creek located on the property. Starting bid \$500/acre. \$5,000 bank check deposit required day of sale.

### ONLINE BIDDING SITE:

[www.proxibid.com/miller-danberry](http://www.proxibid.com/miller-danberry)

The information contained herein is from sources deemed reliable, but no warranty or representation is made as to accuracy thereof. It is subject to correction of errors, omissions, change of price prior to sale or withdrawal from market, all without notice. Further, no warranty or representation is made in regard to any environmental condition that may or may not exist.

**JERRY MILLER, CCIM**  
419.392.6835  
[jmiller@millerdanberry.com](mailto:jmiller@millerdanberry.com)

1656 Henthorne Rd Suite 200, Maumee, OH 43537 | 419.877.7777 | [www.millerdanberry.com](http://www.millerdanberry.com)



"Innovative Solutions at Work"

# ONLINE AUCTION ONLY

40.5 ACRES ON SH 64. SWANTON, OH 43558



**JERRY MILLER, CCIM**

419.392.6835

[jmiller@millerdanberry.com](mailto:jmiller@millerdanberry.com)

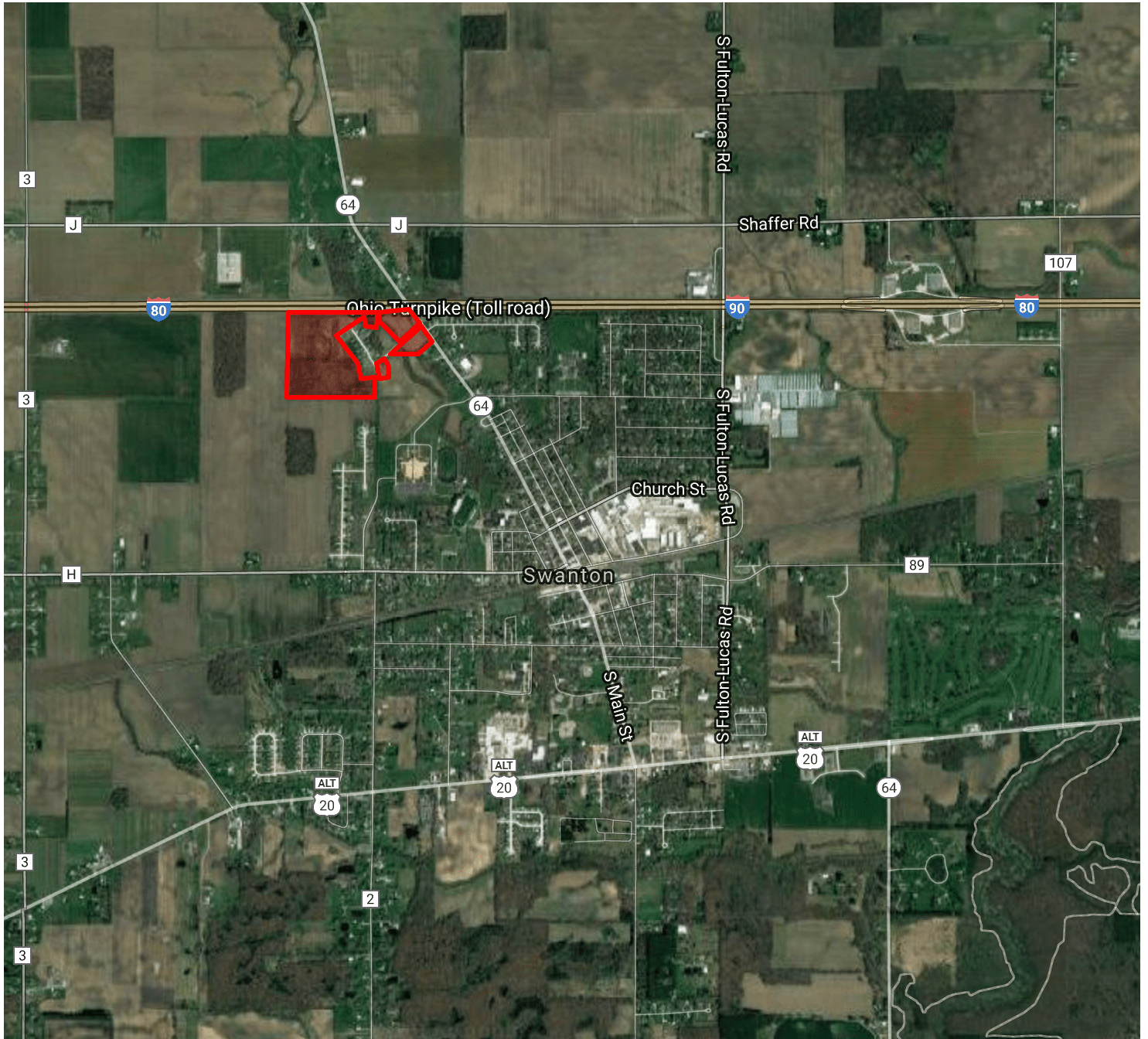
1656 Henthorne Rd Suite 200, Maumee, OH 43537 | 419.877.7777 | [www.millerdanberry.com](http://www.millerdanberry.com)



# ONLINE AUCTION ONLY

40.5 ACRES ON SH 64, SWANTON, OH 43558

"Innovative Solutions at Work"



Map data ©2017 Google Imagery ©2017 , CNES / Airbus, DigitalGlobe, Landsat / Copernicus, State of Ohio / OSIP, USDA Farm Service Agency

**JERRY MILLER, CCIM**

419.392.6835

[jmiller@millerdanberry.com](mailto:jmiller@millerdanberry.com)

1656 Henthorne Rd Suite 200, Maumee, OH 43537 | 419.877.7777 | [www.millerdanberry.com](http://www.millerdanberry.com)